

Registered Address: Chemicea Pharmaceuticals Pvt Ltd, Platinum Springs,
Unit No- A- 205&206 Second floor, Plot No: G-6, G-20 to G 24, Taloja- MIDC, Opp. Dena Bank
Navi Mumbai 410208, MH, INDIA. Email- info@chemicea.com Mob- +91 9284897978

CERTIFICATE OF ANALYSIS

Analysis Date: May 2025

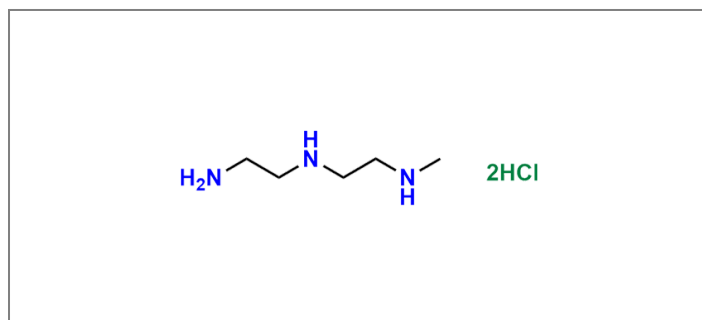
Re-test Date: Apr 2028

Product Name: N1-(2-Aminoethyl)-N2-methylethane-1,2-diamine dihydrochloride

Identification:

Chemical Name: N1-(2-Aminoethyl)-N2-methylethane-1,2-diamine dihydrochloride

Synonyms : NA
CAS Number : 2703752-38-7
CAT Number : CP-CS4971
Molecular Formula : C₅H₁₅N₃ : 2(HCl)
Molecular Weight : 117.20 : 2(36.46)
Batch Number : CP-AEM-DDH-0525



Storage Condition : Tightly closed, Inert atmosphere at 2 to 8° C
Shipping condition : All Products are stable to be shipped at room temperature, if specific condition required it is mention in the COA

Analytical Information:

Sr. No.	Test	Result
1)	Description	White Solid
2)	Solubility	Soluble in Methanol/D ₂ O
3)	MASS By LCMS	Confirm to structure
4)	Purity By ELSD	99.55%
5)	¹ H NMR	Confirm to structure
6)	¹³ C NMR	Confirm to Structure
7)	IR	Confirm to Structure



Prepared and Reviewed By

Ms Priyanka Salunkhe
(Quality Control)

Approved By

Ms Rohini Gagare
(Quality Assurance)

Note: Product supplied by Chemicea are for R&D purpose only and not for human consumptions.