

Registered Address: Chemicea Pharmaceuticals Pvt Ltd, Platinum Springs,
Unit No- A- 205&206 Second floor, Plot No: G-6, G-20 to G 24, Taloja- MIDC, Opp. Dena Bank
Navi Mumbai 410208, MH, INDIA. Email- info@chemicea.com Mob- +91 9284897978

CERTIFICATE OF ANALYSIS

Analysis Date: Mar 2025

Re-test Date: Feb 2028

Product Name: (S)-(-)-1-(1-Naphthyl)ethylamine

Identification:

Chemical Name: (S)-1-(Naphthalen-1-yl)ethan-1-amine

Synonyms : NA

CAS Number : 10420-89-0

CAT Number : CP-C21037

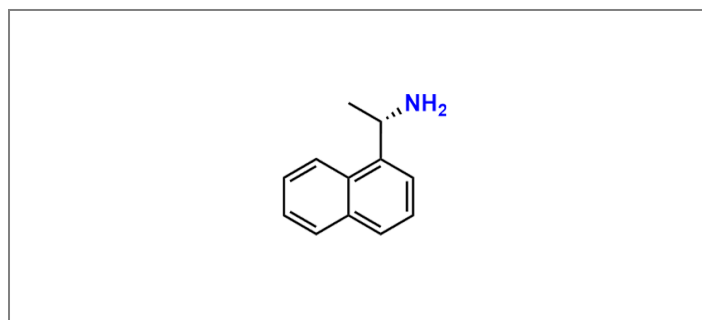
Molecular Formula : C₁₂H₁₃N

Molecular Weight : 171.24

Batch Number : CP-NAP-EA-0325

Storage Condition : Tightly closed, Inert atmosphere at 2 to 8° C

Shipping condition : All Products are stable to be shipped at room temperature, if specific condition required it is mention in the COA



Analytical Information:

Sr. No.	Test	Result
1)	Description	Orange Liquid
2)	Solubility	Soluble in Methanol/DMSO
3)	MASS By LCMS	Confirm to structure
4)	Purity By HPLC	99.32 %
5)	¹ HNMR	Confirm to structure



Prepared and Reviewed By



Ms Priyanka Salunkhe
(Quality Control)

Approved By



Ms Rohini Gagare
(Quality Assurance)

Note: Product supplied by Chemicea are for R&D purpose only and not for human consumptions.